

420

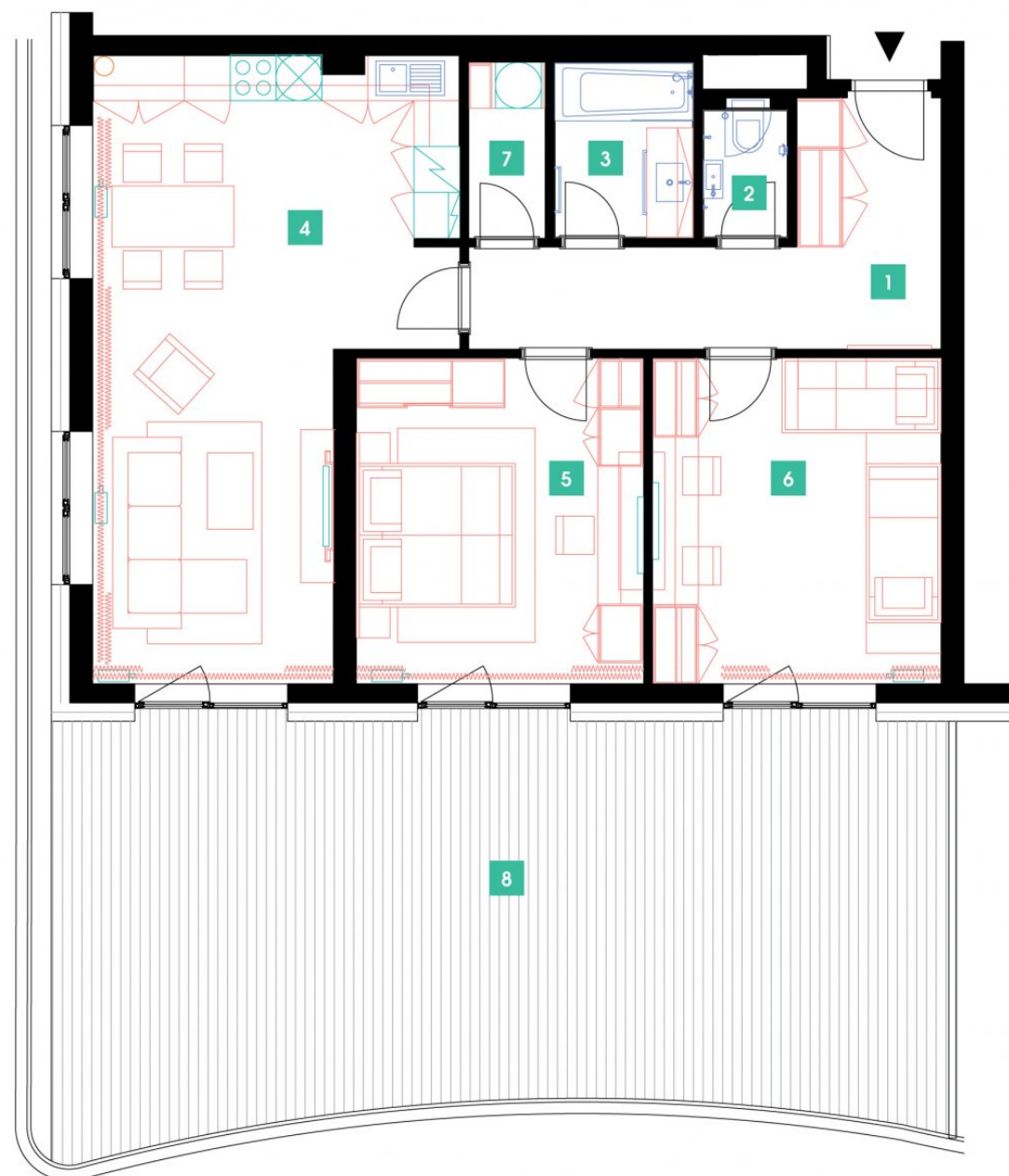
4th floor | 3+kk | 90m² | Price of rental: rented available: 03/2021



WE RECOMMEND

„A nice family apartment with an atypical arched terrace of 60 m2! The apartment includes a chamber, a separate toilet or electric outdoor roller blinds.“

1	vestibule + corridor	12,3 m ²
2	WC	1,85 m ²
3	bathroom	4,45 m ²
4	living room + kitchenette	34,97 m ²
5	bedroom	18,42 m ²
6	room	15,91 m ²
7	chamber	2,38 m ²
TOTAL 4. FLOOR		90,28 m ²
8	terrace	60,18 m ²



- ✓ Fully furnished apartment
- ✓ Customized interior
- ✓ Furnished kitchen
- ✓ All appliances
- ✓ Wi-Fi
- ✓ LED TV - satellite channels
- ✓ Health mattresses
- ✓ Cellar
- ✓ Reception with hotel services (concierge)
- ✓ 24/7 security
- ✓ Underground guarded parking
- ✓ Charging station for electric cars
- ✓ Fast, smart lifts
- ✓ Sorted-waste chute
- ✓ Cost-saving heat recovery ventilation
- ✓ Superior sound insulation between apartments
- ✓ Special sound insulation of floors
- ✓ PENB "A"
- ✓ FTTH high-speed Internet
- ✓ Shopping centre directly in the building compound
- ✓ A large supermarket
- ✓ Restaurant
- ✓ Fitness and wellness
- ✓ Kindergarten, playroom and groups and activities for children
- ✓ Impressive modern architecture