

1506

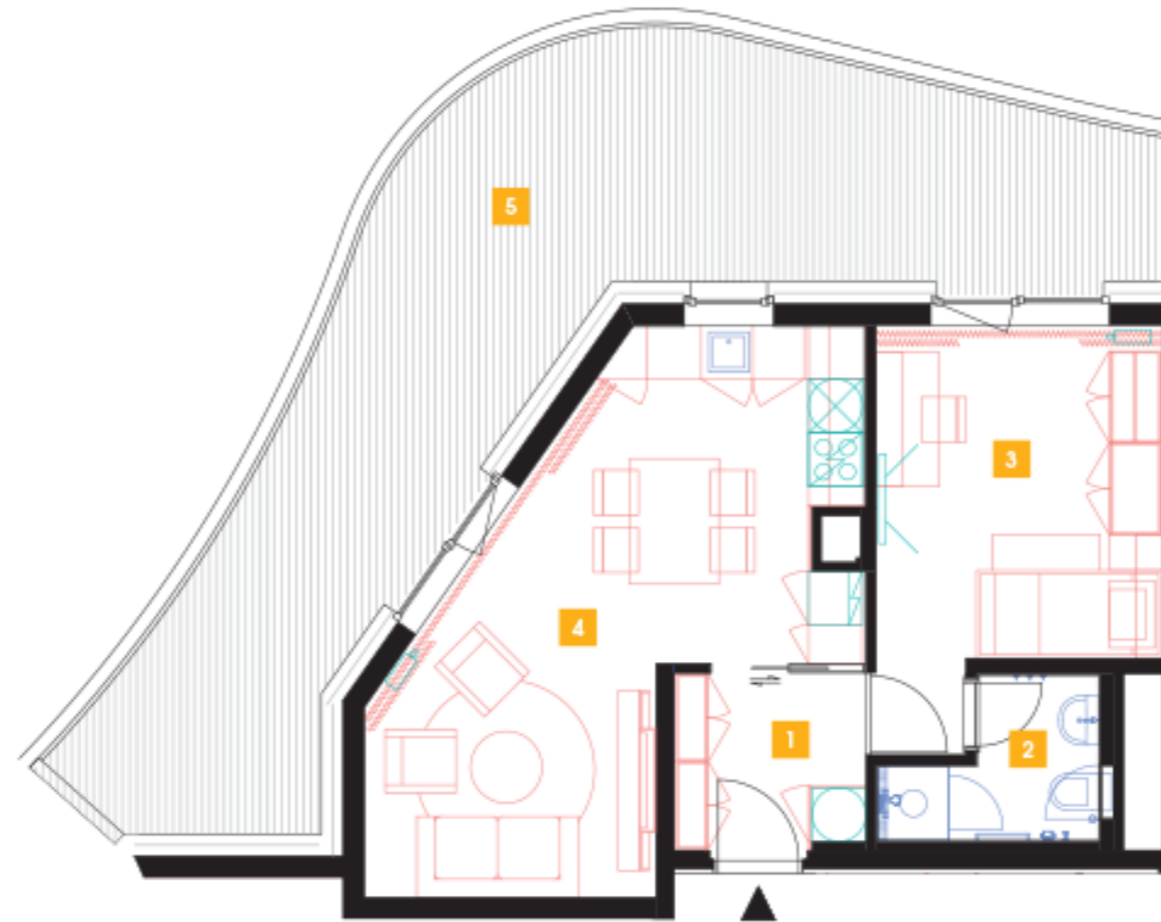
15th floor | 2+kk | 47m² | Price of rental: rented available: 03/2022



WE RECOMMEND

„The apartment on the top floor offers fantastic views of the Prague skyline from the wonderful terrace! The apartment is also equipped with a special intelligent smart system. It is entered through a private hall.“

| | | |
|------------------------|---------------------------|----------------------------|
| 1 | vestibule | 4,38 m ² |
| 2 | bathroom + toilet | 3,53 m ² |
| 3 | bedroom | 13,48 m ² |
| 4 | living room + kitchenette | 25,3 m ² |
| TOTAL 15. FLOOR | | 46,69 m² |
| 5 | balcony | 37,32 m ² |



- ✓ Fully furnished apartment
- ✓ Customized interior
- ✓ Furnished kitchen
- ✓ All appliances
- ✓ Wi-Fi
- ✓ LED TV - satellite channels
- ✓ Health mattresses
- ✓ Cellar
- ✓ Reception with hotel services (concierge)
- ✓ 24/7 security
- ✓ Underground guarded parking
- ✓ Charging station for electric cars
- ✓ Fast, smart lifts
- ✓ Sorted-waste chute
- ✓ Cost-saving heat recovery ventilation
- ✓ Superior sound insulation between apartments
- ✓ Special sound insulation of floors
- ✓ PENB "A"
- ✓ FTTD high-speed Internet
- ✓ Shopping centre directly in the building compound
- ✓ A large supermarket
- ✓ Restaurant
- ✓ Fitness and wellness
- ✓ Kindergarten, playroom and groups and activities for children
- ✓ Impressive modern architecture

