

1502

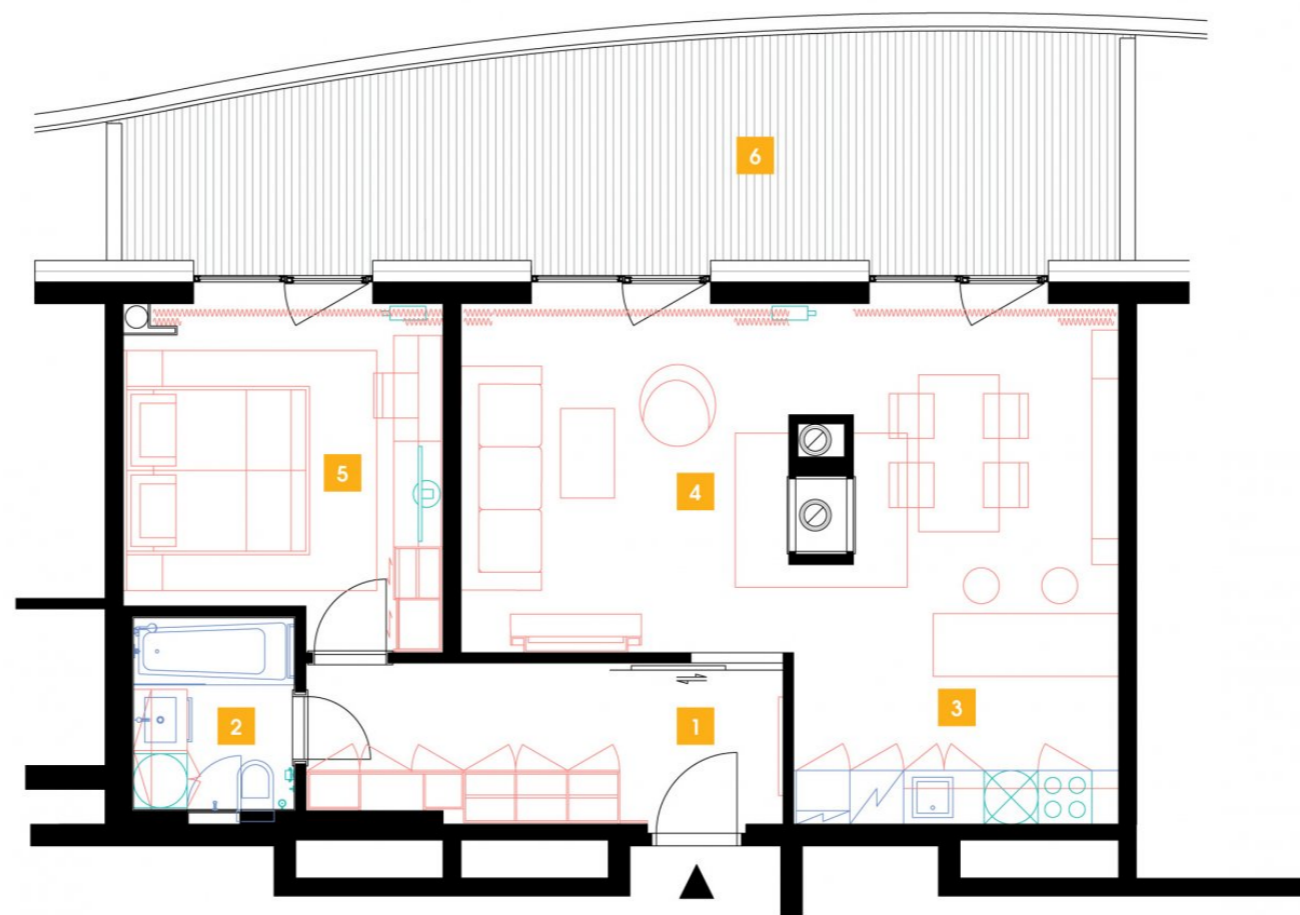
15th floor | 2+kk | 65m<sup>2</sup> | Price of rental: rented available: 10/2019



**WE RECOMMEND**

„To put it simply: you are alone on this floor! Incredible views of all the City of Prague! And what quiet... A double-sided fireplace, a stylish and customized bar and very pleasant LED lighting... this all is a part of this very beautiful apartment.“

1	vestibule	9,55 m <sup>2</sup>
2	bathroom + toilet	4,16 m <sup>2</sup>
3	kitchen	22,03 m <sup>2</sup>
4	living room	15,44 m <sup>2</sup>
5	bedroom	14 m <sup>2</sup>
<b>TOTAL 15. FLOOR</b>		<b>65,18 m<sup>2</sup></b>
6	terrace	26,33 m <sup>2</sup>



- ✓ Fully furnished apartment
- ✓ Customized interior
- ✓ Furnished kitchen
- ✓ All appliances
- ✓ Wi-Fi
- ✓ LED TV - satellite channels
- ✓ Health mattresses
- ✓ Cellar
- ✓ Reception with hotel services (concierge)
- ✓ 24/7 security
- ✓ Underground guarded parking
- ✓ Charging station for electric cars
- ✓ Fast, smart lifts
- ✓ Sorted-waste chute
- ✓ Cost-saving heat recovery ventilation
- ✓ Superior sound insulation between apartments
- ✓ Special sound insulation of floors
- ✓ PENB "A"
- ✓ FTTD high-speed Internet
- ✓ Shopping centre directly in the building compound
- ✓ A large supermarket
- ✓ Restaurant
- ✓ Fitness and wellness
- ✓ Kindergarten, playroom and groups and activities for children
- ✓ Impressive modern architecture