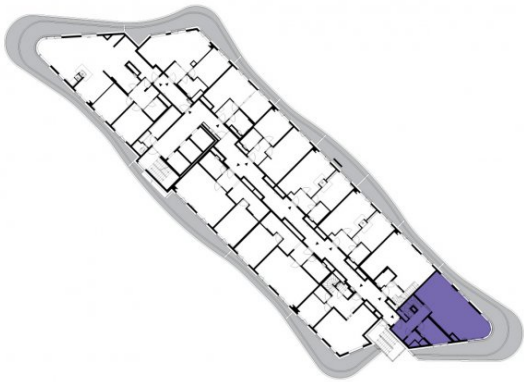




1406

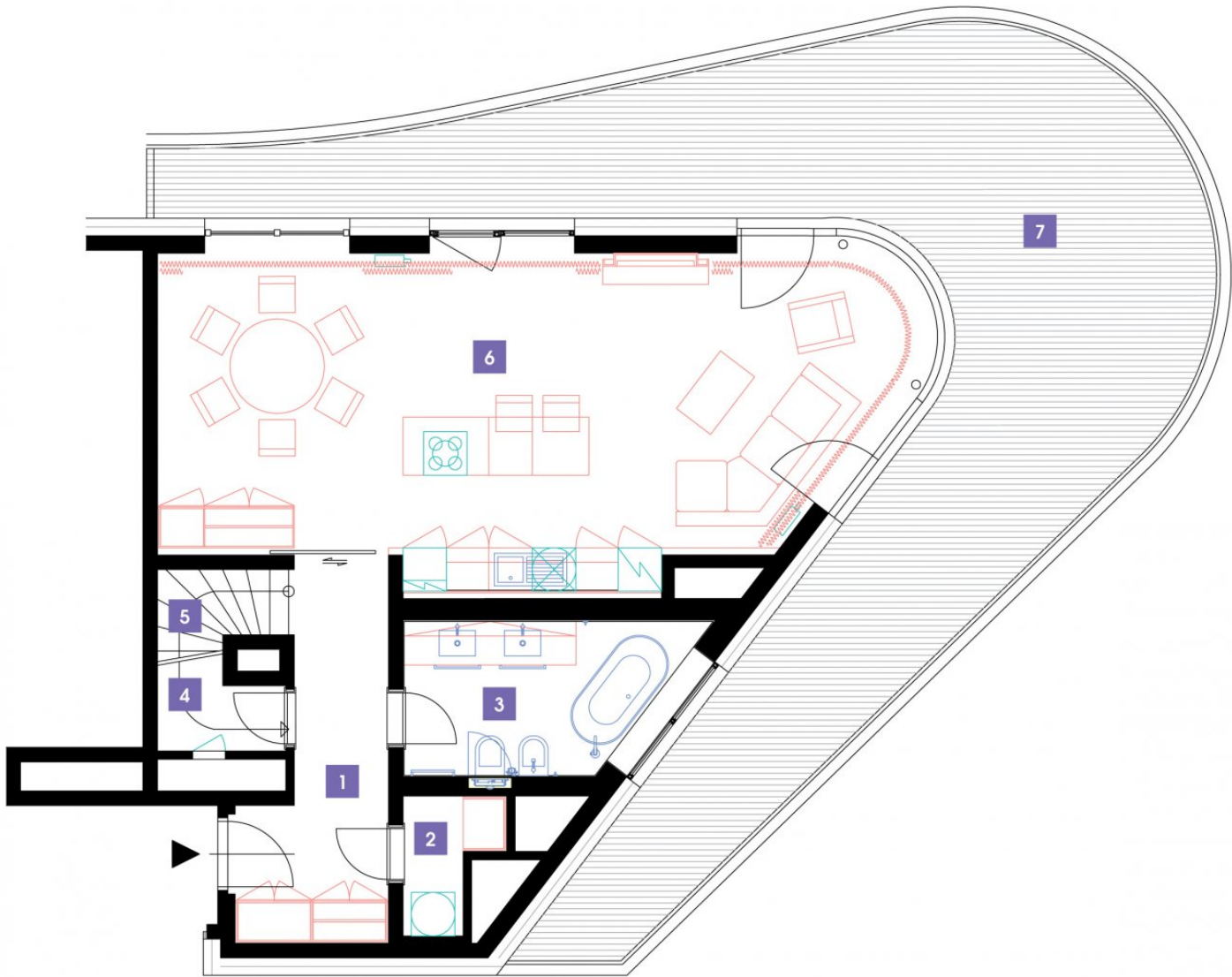
14th floor | 3+kk | suite | Price of rental: 42 900 CZK
available: 06/2024



WE RECOMMEND

„An exceptional duplex on the top floor! The most beautiful view of the entire City of Prague! Moreover, the apartment is equipped with a special intelligent smart system and it includes two bathrooms and a sauna. From a spacious corner shower you can directly enter the terrace! A large living room with exclusive arched windows and a stylish bar. An impressive view from the bedroom, which is situated on the highest point of Luka Living.“

1	vestibule + corridor	8,9 m ²
2	chamber	2,2 m ²
3	bathroom + toilet	7,59 m ²
4	staircase	1,91 m ²
5	staircase	3,85 m ²
6	living room + kitchenette	48,14 m ²
TOTAL 14. FLOOR		72,59 m ²
7	terrace	58,44 m ²

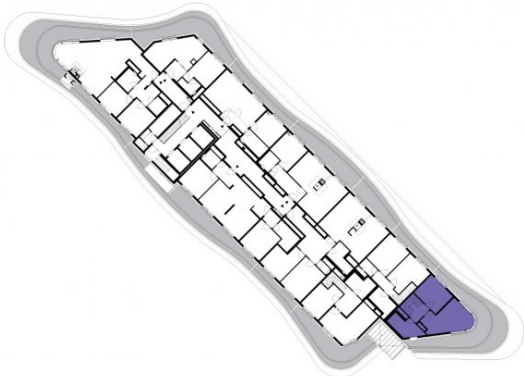


- ✓ Fully furnished apartment
- ✓ Customized interior
- ✓ Furnished kitchen
- ✓ All appliances
- ✓ Wi-Fi
- ✓ LED TV - satellite channels
- ✓ Health mattresses
- ✓ Cellar
- ✓ Reception with hotel services (concierge)
- ✓ 24/7 security
- ✓ Underground guarded parking
- ✓ Charging station for electric cars
- ✓ Fast, smart lifts
- ✓ Sorted-waste chute
- ✓ Cost-saving heat recovery ventilation
- ✓ Superior sound insulation between apartments
- ✓ Special sound insulation of floors
- ✓ PENB "A"
- ✓ FTTD high-speed Internet
- ✓ Shopping centre directly in the building compound
- ✓ A large supermarket
- ✓ Restaurant
- ✓ Fitness and wellness
- ✓ Kindergarten, playroom and groups and activities for children
- ✓ Impressive modern architecture



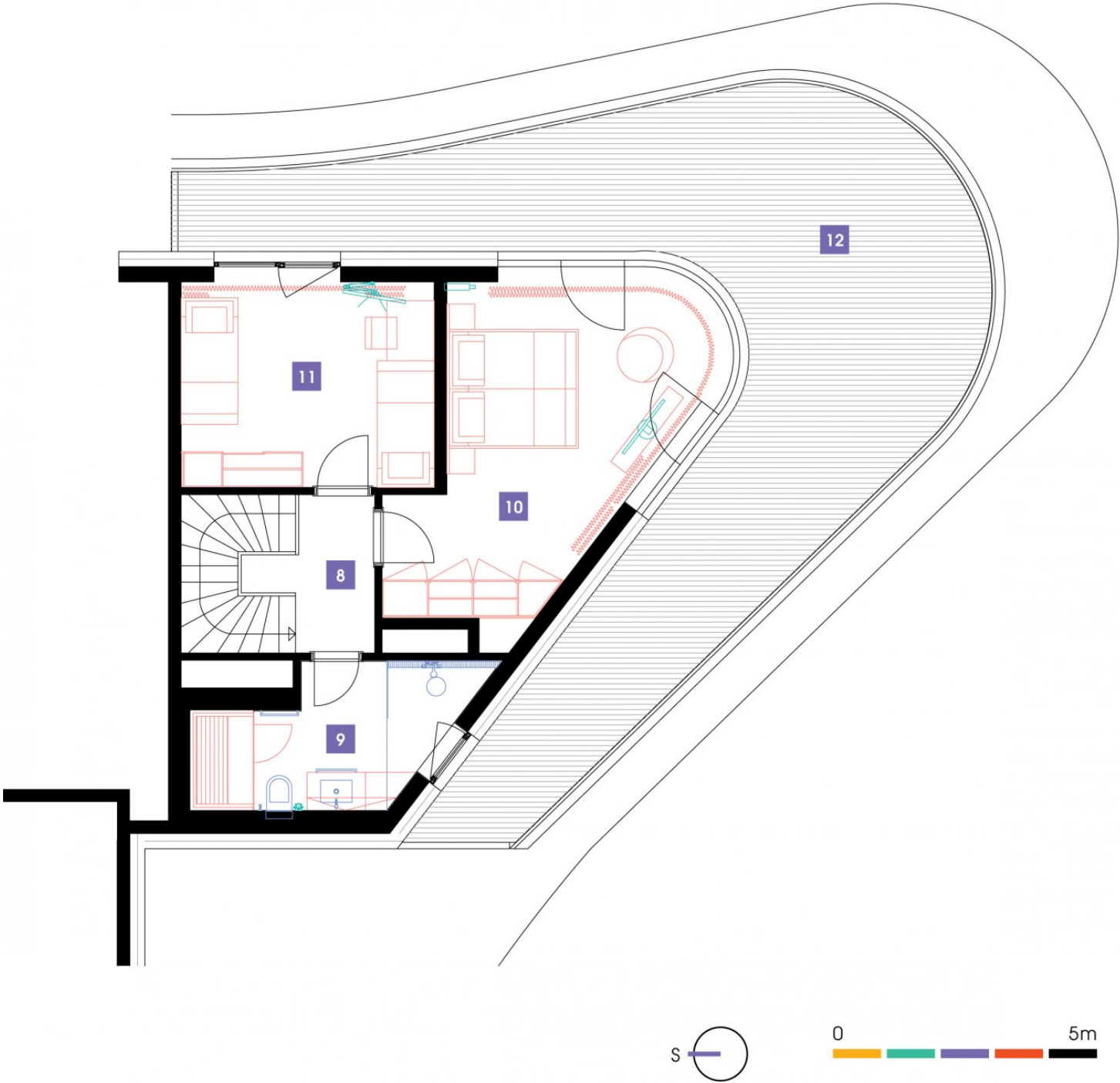
1406

14th floor | 3+kk | suite | Price of rental: 42 900 CZK
available: 06/2024



„An exceptional duplex on the top floor! The most beautiful view of the entire City of Prague! Moreover, the apartment is equipped with a special intelligent smart system and it includes two bathrooms and a sauna. From a spacious corner shower you can directly enter the terrace! A large living room with exclusive arched windows and a stylish bar. An impressive view from the bedroom, which is situated on the highest point of Luka Living.“

8	corridor	3 m ²
9	bathroom + sauna + toilet	8,08 m ²
10	bedroom	23,12 m ²
11	room	12,46 m ²
TOTAL 15. FLOOR		46,66 m ²
12	terrace	53,78 m ²



- ✓ Fully furnished apartment
- ✓ Customized interior
- ✓ Furnished kitchen
- ✓ All appliances
- ✓ Wi-Fi
- ✓ LED TV - satellite channels
- ✓ Health mattresses
- ✓ Cellar
- ✓ Reception with hotel services (concierge)
- ✓ 24/7 security
- ✓ Underground guarded parking
- ✓ Charging station for electric cars
- ✓ Fast, smart lifts
- ✓ Sorted-waste chute
- ✓ Cost-saving heat recovery ventilation
- ✓ Superior sound insulation between apartments
- ✓ Special sound insulation of floors
- ✓ PENB "A"
- ✓ FTTH high-speed Internet
- ✓ Shopping centre directly in the building compound
- ✓ A large supermarket
- ✓ Restaurant
- ✓ Fitness and wellness
- ✓ Kindergarten, playroom and groups and activities for children
- ✓ Impressive modern architecture