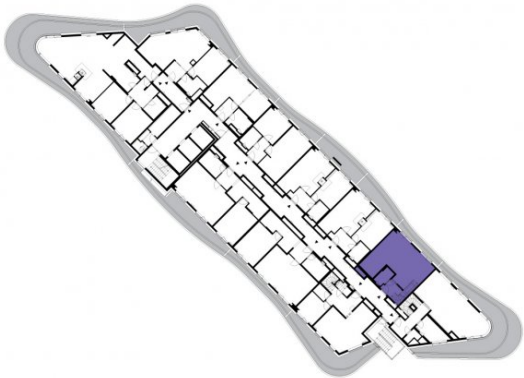




1405

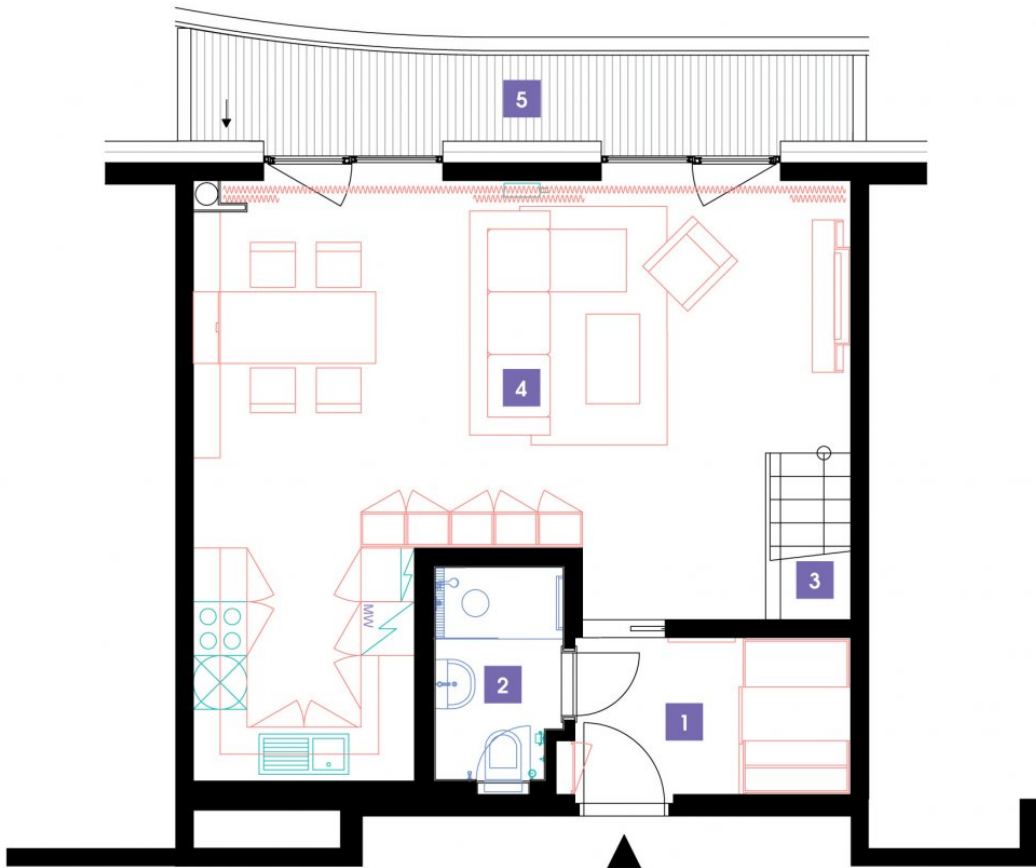
14th floor | 3+kk | 99m<sup>2</sup> | Price of rental: rented available: 04/2022



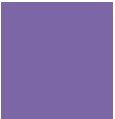
WE RECOMMEND

„An exceptional duplex with breathtaking views of Prague from the top floors! The apartment features two bathrooms with a bathtub, a shower and a bidet. There is a chamber in the apartment and comfortable indirect LED lighting in the living room.“

1	vestibule	5,7 m <sup>2</sup>
2	bathroom + toilet	3,46 m <sup>2</sup>
3	staircase	3,94 m <sup>2</sup>
4	living room + kitchenette	39,96 m <sup>2</sup>
TOTAL 14. FLOOR		53,06 m <sup>2</sup>
5	terrace	10,21 m <sup>2</sup>

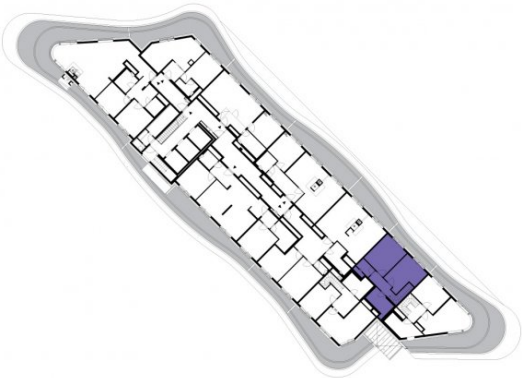


- ✓ Fully furnished apartment
- ✓ Customized interior
- ✓ Furnished kitchen
- ✓ All appliances
- ✓ Wi-Fi
- ✓ LED TV - satellite channels
- ✓ Health mattresses
- ✓ Cellar
- ✓ Reception with hotel services (concierge)
- ✓ 24/7 security
- ✓ Underground guarded parking
- ✓ Charging station for electric cars
- ✓ Fast, smart lifts
- ✓ Sorted-waste chute
- ✓ Cost-saving heat recovery ventilation
- ✓ Superior sound insulation between apartments
- ✓ Special sound insulation of floors
- ✓ PENB "A"
- ✓ FTTH high-speed Internet
- ✓ Shopping centre directly in the building compound
- ✓ A large supermarket
- ✓ Restaurant
- ✓ Fitness and wellness
- ✓ Kindergarten, playroom and groups and activities for children
- ✓ Impressive modern architecture



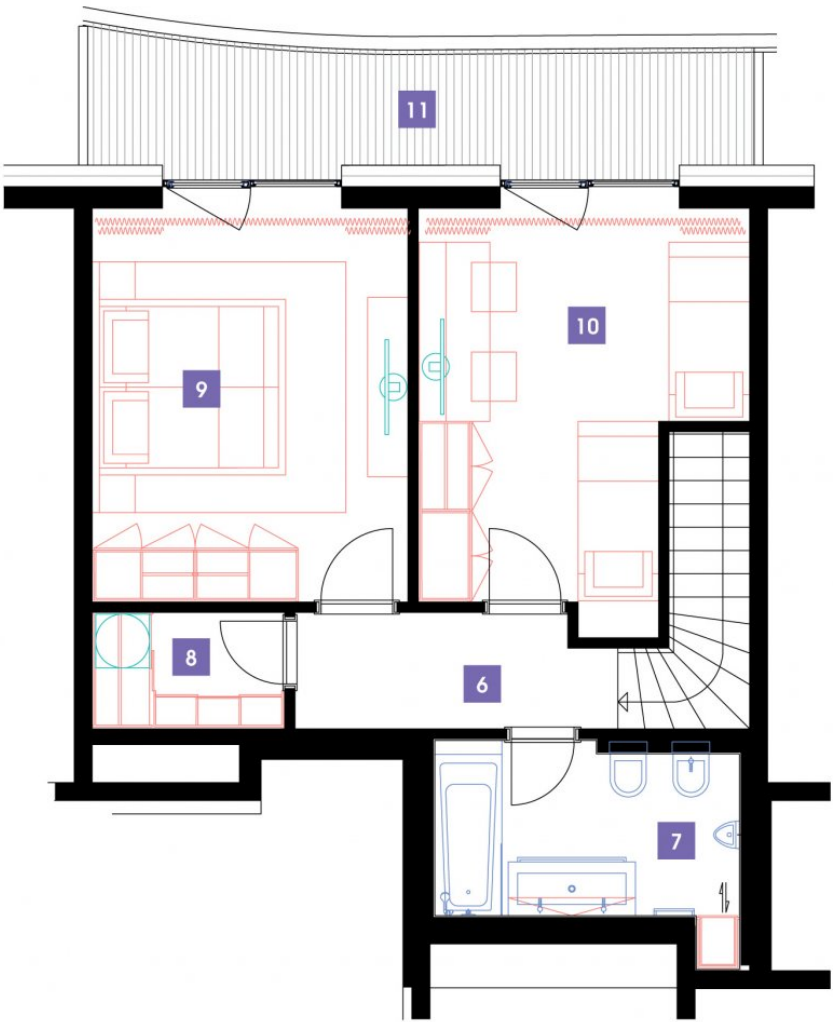
1405

14th floor | 3+kk | 99m<sup>2</sup> | Price of rental: rented available: 04/2022



„An exceptional duplex with breathtaking views of Prague from the top floors! The apartment features two bathrooms with a bathtub, a shower and a bidet. There is a chamber in the apartment and comfortable indirect LED lighting in the living room.“

6	corridor	5,08 m <sup>2</sup>
7	bathroom + toilet	6,87 m <sup>2</sup>
8	chamber	2,92 m <sup>2</sup>
9	bedroom	14,32 m <sup>2</sup>
10	room	17,41 m <sup>2</sup>
TOTAL 15. FLOOR		46,6 m <sup>2</sup>
11	terrace	8,38 m <sup>2</sup>



- ✓ Fully furnished apartment
- ✓ Customized interior
- ✓ Furnished kitchen
- ✓ All appliances
- ✓ Wi-Fi
- ✓ LED TV - satellite channels
- ✓ Health mattresses
- ✓ Cellar
- ✓ Reception with hotel services (concierge)
- ✓ 24/7 security
- ✓ Underground guarded parking
- ✓ Charging station for electric cars
- ✓ Fast, smart lifts
- ✓ Sorted-waste chute
- ✓ Cost-saving heat recovery ventilation
- ✓ Superior sound insulation between apartments
- ✓ Special sound insulation of floors
- ✓ PENB "A"
- ✓ FTTH high-speed Internet
- ✓ Shopping centre directly in the building compound
- ✓ A large supermarket
- ✓ Restaurant
- ✓ Fitness and wellness
- ✓ Kindergarten, playroom and groups and activities for children
- ✓ Impressive modern architecture