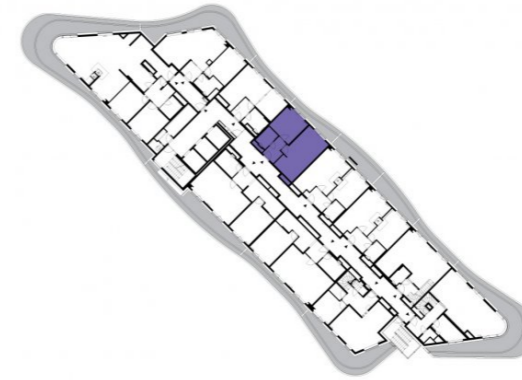


1402

14th floor | 2+kk | 49m<sup>2</sup> | Price of rental: rented available: 04/2018



**WE RECOMMEND**

„You are almost alone on this floor. An incredible view of the Prague skyline! Enjoy the atmosphere on your terrace...”

1	vestibule	5,56 m <sup>2</sup>
2	bathroom + toilet	4,36 m <sup>2</sup>
3	bedroom	14,31 m <sup>2</sup>
4	living room + kitchenette	25,72 m <sup>2</sup>
<b>TOTAL 14. FLOOR</b>		<b>49,95 m<sup>2</sup></b>
5	terrace	10,41 m <sup>2</sup>



- ✓ Fully furnished apartment
- ✓ Customized interior
- ✓ Furnished kitchen
- ✓ All appliances
- ✓ Wi-Fi
- ✓ LED TV - satellite channels
- ✓ Health mattresses
- ✓ Cellar
- ✓ Reception with hotel services (concierge)
- ✓ 24/7 security
- ✓ Underground guarded parking
- ✓ Charging station for electric cars
- ✓ Fast, smart lifts
- ✓ Sorted-waste chute
- ✓ Cost-saving heat recovery ventilation
- ✓ Superior sound insulation between apartments
- ✓ Special sound insulation of floors
- ✓ PENB "A"
- ✓ FTTD high-speed Internet
- ✓ Shopping centre directly in the building compound
- ✓ A large supermarket
- ✓ Restaurant
- ✓ Fitness and wellness
- ✓ Kindergarten, playroom and groups and activities for children
- ✓ Impressive modern architecture

