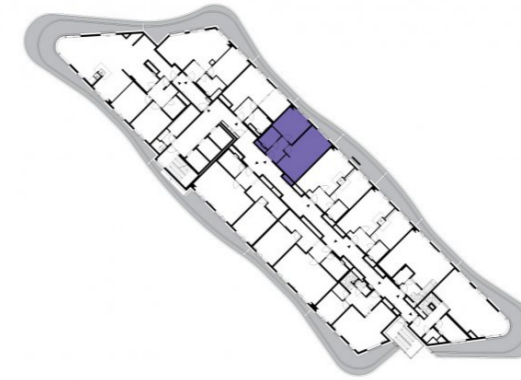


1402

14th floor | 2+kk | 49m<sup>2</sup> | Price of rental: rented available: 04/2018



**WE RECOMMEND**

„You are almost alone on this floor. An incredible view of the Prague skyline! Enjoy the atmosphere on your terrace...”

|                        |                           |                            |
|------------------------|---------------------------|----------------------------|
| 1                      | vestibule                 | 5,56 m <sup>2</sup>        |
| 2                      | bathroom + toilet         | 4,36 m <sup>2</sup>        |
| 3                      | bedroom                   | 14,31 m <sup>2</sup>       |
| 4                      | living room + kitchenette | 25,72 m <sup>2</sup>       |
| <b>TOTAL 14. FLOOR</b> |                           | <b>49,95 m<sup>2</sup></b> |
| 5                      | terrace                   | 10,41 m <sup>2</sup>       |



- ✓ Fully furnished apartment
- ✓ Customized interior
- ✓ Furnished kitchen
- ✓ All appliances
- ✓ Wi-Fi
- ✓ LED TV - satellite channels
- ✓ Health mattresses
- ✓ Cellar
- ✓ Reception with hotel services (concierge)
- ✓ 24/7 security
- ✓ Underground guarded parking
- ✓ Charging station for electric cars
- ✓ Fast, smart lifts
- ✓ Sorted-waste chute
- ✓ Cost-saving heat recovery ventilation
- ✓ Superior sound insulation between apartments
- ✓ Special sound insulation of floors
- ✓ PENB "A"
- ✓ FTTD high-speed Internet
- ✓ Shopping centre directly in the building compound
- ✓ A large supermarket
- ✓ Restaurant
- ✓ Fitness and wellness
- ✓ Kindergarten, playroom and groups and activities for children
- ✓ Impressive modern architecture

