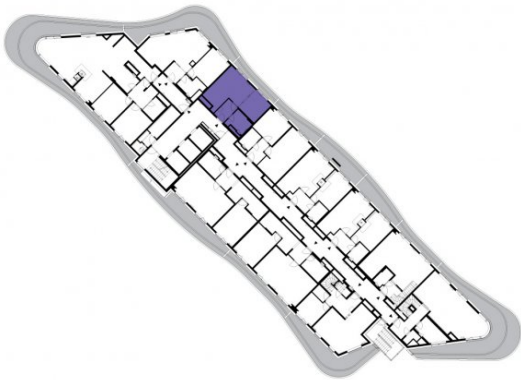




1401

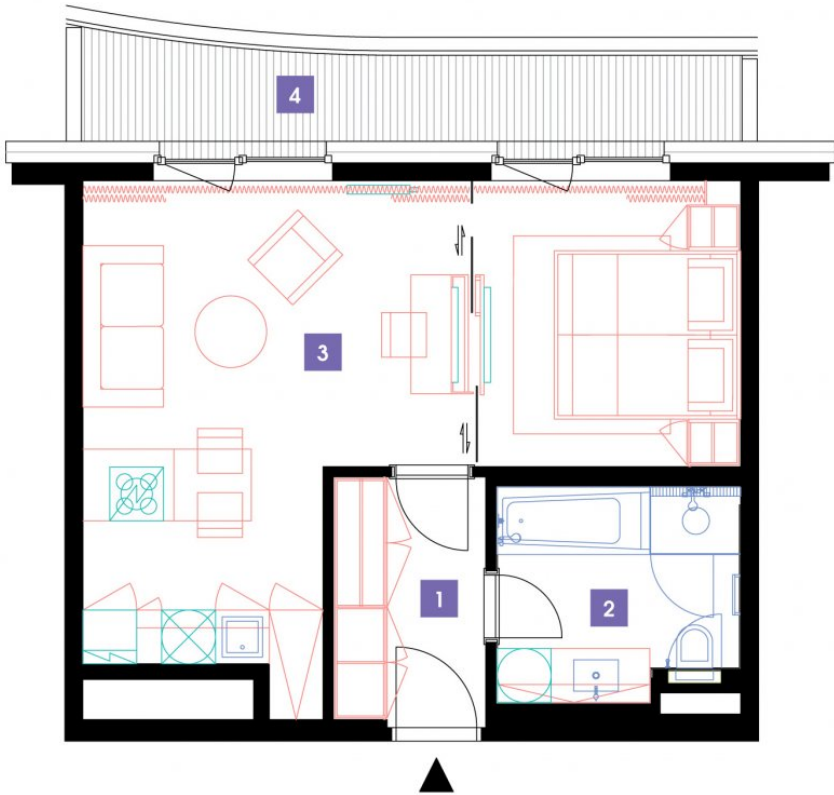
14th floor | 1+kk | 42m<sup>2</sup> | Price of rental: rented available: 02/2024



WE RECOMMEND

„You are almost alone on this floor. An incredible view of the Prague skyline! Enjoy the atmosphere on your terrace...”

1	vestibule	4,95 m <sup>2</sup>
2	bathroom + toilet	5,14 m <sup>2</sup>
3	bedroom + living room + kitchenette	32,59 m <sup>2</sup>
TOTAL 14. FLOOR		42,68 m <sup>2</sup>
4	terrace	8,04 m <sup>2</sup>



- ✓ Fully furnished apartment
- ✓ Customized interior
- ✓ Furnished kitchen
- ✓ All appliances
- ✓ Wi-Fi
- ✓ LED TV - satellite channels
- ✓ Health mattresses
- ✓ Cellar
- ✓ Reception with hotel services (concierge)
- ✓ 24/7 security
- ✓ Underground guarded parking
- ✓ Charging station for electric cars
- ✓ Fast, smart lifts
- ✓ Sorted-waste chute
- ✓ Cost-saving heat recovery ventilation
- ✓ Superior sound insulation between apartments
- ✓ Special sound insulation of floors
- ✓ PENB “A”
- ✓ FTTD high-speed Internet
- ✓ Shopping centre directly in the building compound
- ✓ A large supermarket
- ✓ Restaurant
- ✓ Fitness and wellness
- ✓ Kindergarten, playroom and groups and activities for children
- ✓ Impressive modern architecture

