



1314

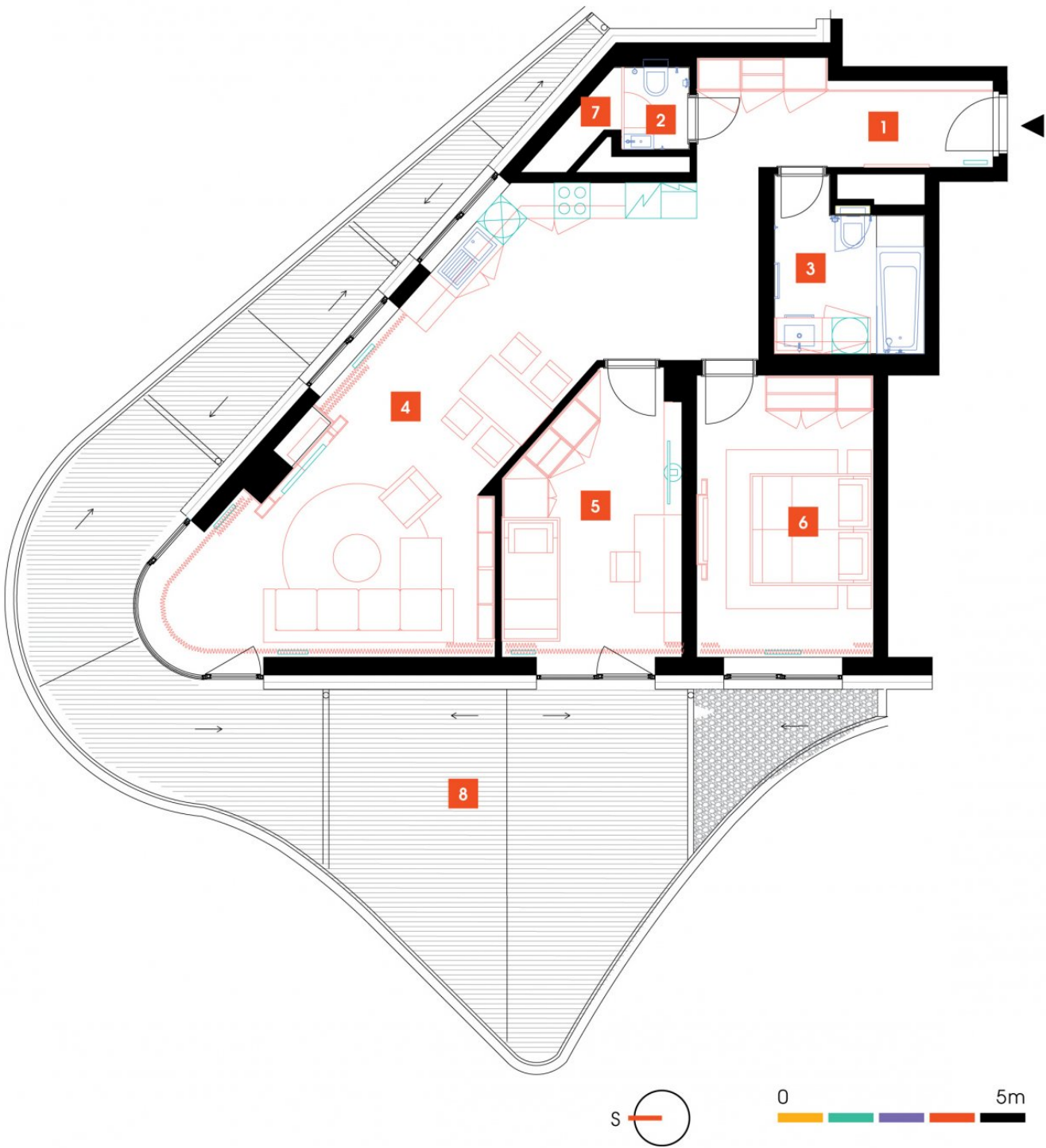
13th floor | 3+kk | 94m<sup>2</sup> | Price of rental: rented available: 06/2022



WE RECOMMEND

„A very interesting apartment with a breathtaking view of Prague and the Central Park from an atypical large terrace. The living room offers a view from exclusive arched windows! The apartment also features comfortable indirect LED lighting and a chamber. “

1	vestibule	8,34 m <sup>2</sup>
2	WC	1,58 m <sup>2</sup>
3	bathroom + toilet	6,46 m <sup>2</sup>
4	living room + kitchenette	43,31 m <sup>2</sup>
5	room	14,7 m <sup>2</sup>
6	bedroom	16,16 m <sup>2</sup>
7	chamber	1,18 m <sup>2</sup>
TOTAL 13. FLOOR		91,73 m <sup>2</sup>
8	terrace	35,5 m <sup>2</sup>



- ✓ Fully furnished apartment
- ✓ Customized interior
- ✓ Furnished kitchen
- ✓ All appliances
- ✓ Wi-Fi
- ✓ LED TV - satellite channels
- ✓ Health mattresses
- ✓ Cellar
- ✓ Reception with hotel services (concierge)
- ✓ 24/7 security
- ✓ Underground guarded parking
- ✓ Charging station for electric cars
- ✓ Fast, smart lifts
- ✓ Sorted-waste chute
- ✓ Cost-saving heat recovery ventilation
- ✓ Superior sound insulation between apartments
- ✓ Special sound insulation of floors
- ✓ PENB "A"
- ✓ FTTH high-speed Internet
- ✓ Shopping centre directly in the building compound
- ✓ A large supermarket
- ✓ Restaurant
- ✓ Fitness and wellness
- ✓ Kindergarten, playroom and groups and activities for children
- ✓ Impressive modern architecture