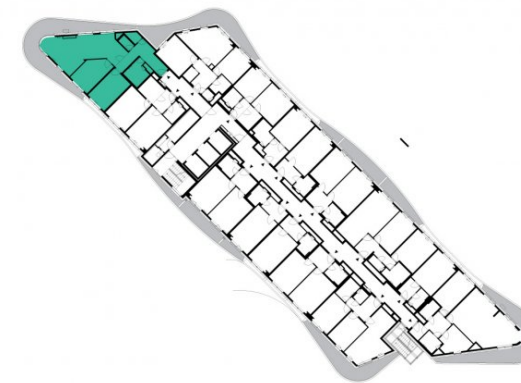


1214

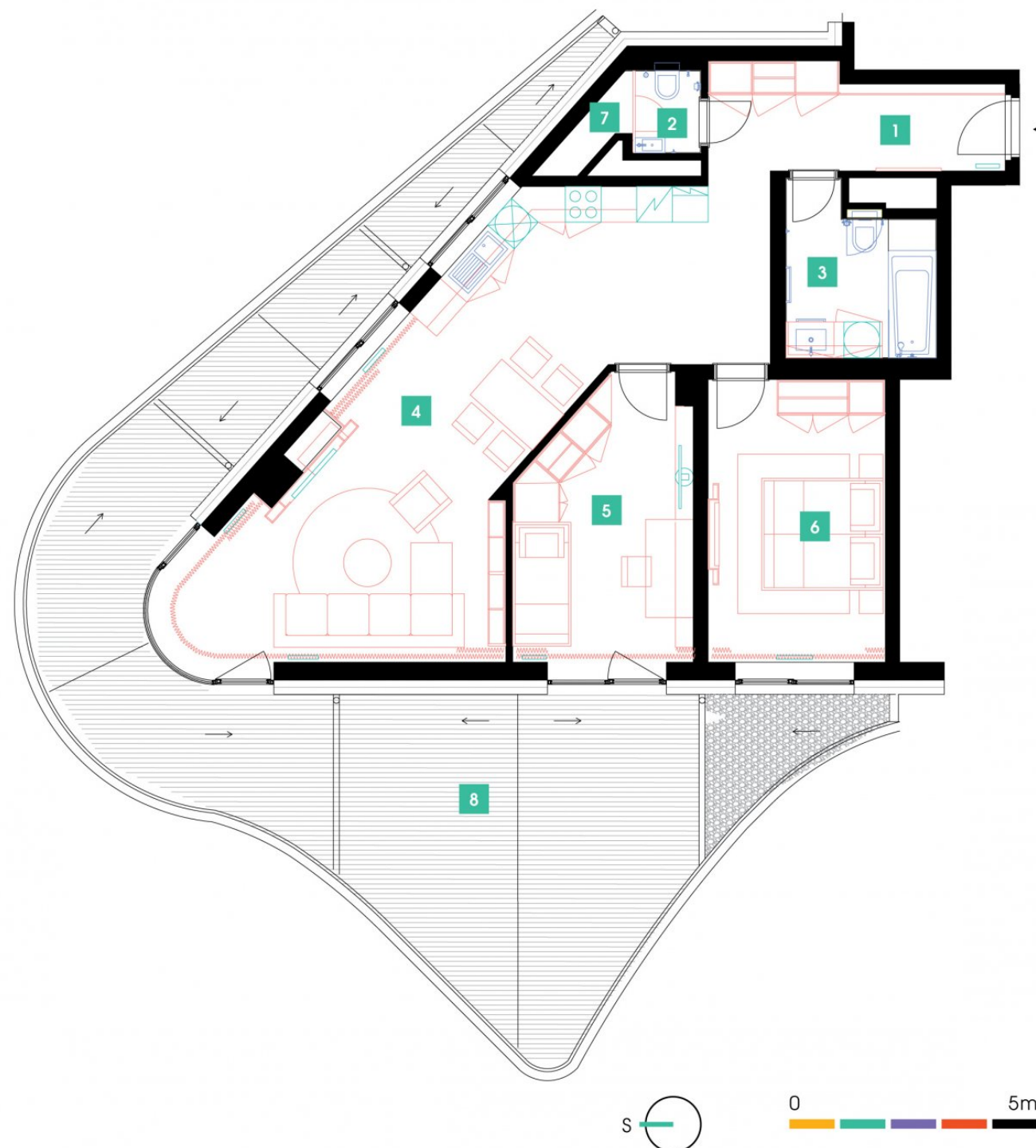
12th floor | 3+kk | 94m² | Price of rental: rented
available: 01/2019



WE RECOMMEND

„A very interesting apartment with a breathtaking view of Prague and the Central Park from an atypical large terrace. The living room offers a view from exclusive arched windows! Moreover, the apartment is equipped with a special intelligent smart system. The furnishings include comfortable indirect LED lighting and a chamber. You appreciate the quality Nobilia kitchen and the heat recovery unit, which allows you to save energy and clean the air.“

| | | |
|-----------------|---------------------------|----------------------|
| 1 | vestibule | 8,34 m ² |
| 2 | WC | 1,58 m ² |
| 3 | bathroom + toilet | 6,46 m ² |
| 4 | living room + kitchenette | 43,31 m ² |
| 5 | room | 14,7 m ² |
| 6 | bedroom | 16,16 m ² |
| 7 | chamber | 1,18 m ² |
| TOTAL 12. FLOOR | | 91,73 m ² |
| 8 | terrace | 35,5 m ² |



- ✓ Fully furnished apartment
- ✓ Customized interior
- ✓ Furnished kitchen
- ✓ All appliances
- ✓ Wi-Fi
- ✓ LED TV - satellite channels
- ✓ Health mattresses
- ✓ Cellar
- ✓ Reception with hotel services (concierge)
- ✓ 24/7 security
- ✓ Underground guarded parking
- ✓ Charging station for electric cars
- ✓ Fast, smart lifts
- ✓ Sorted-waste chute
- ✓ Cost-saving heat recovery ventilation
- ✓ Superior sound insulation between apartments
- ✓ Special sound insulation of floors
- ✓ PENB "A"
- ✓ FTTD high-speed Internet
- ✓ Shopping centre directly in the building compound
- ✓ A large supermarket
- ✓ Restaurant
- ✓ Fitness and wellness
- ✓ Kindergarten, playroom and groups and activities for children
- ✓ Impressive modern architecture